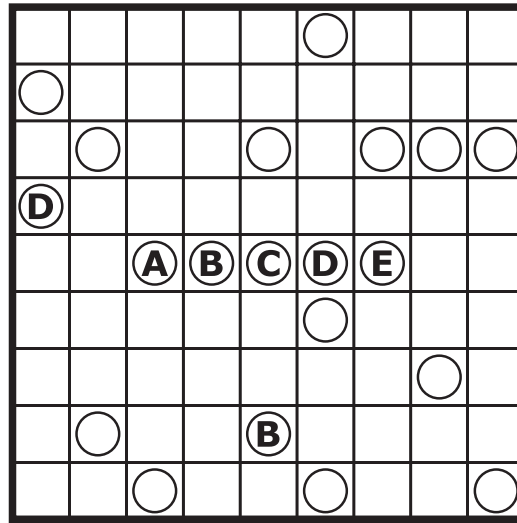
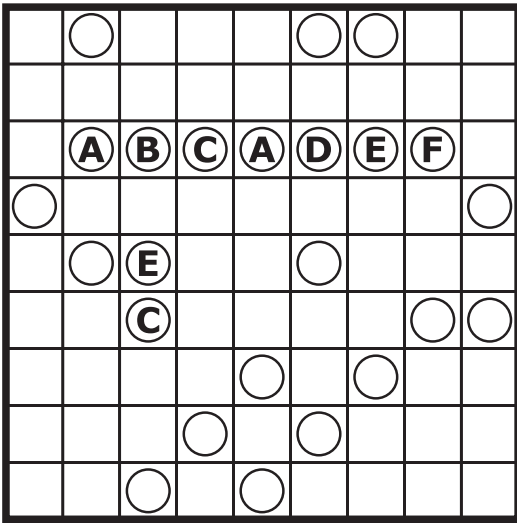
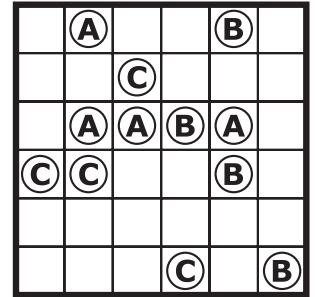


6. Punchers

7 + 6



Example:



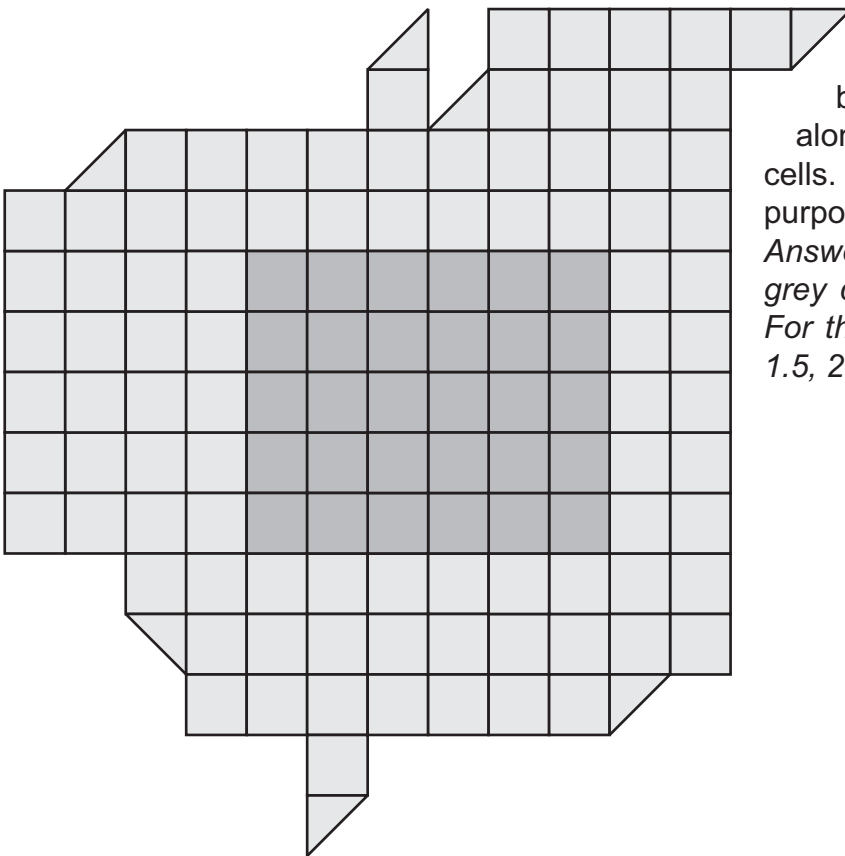
In every table there were made two pairs of holes by six (five in second puzzle)

punchers of the different size. Different letters describe the holes made with different punchers. Define the size of all the punchers.

Answer key: write down the letters corresponding to punchers in order of increasing size. For the example the answer would be: ABC.

7. Cut

6



Divide the figure into seven parts of the same shape and size. Parts can be rotated and reflected. Cuts can go along grid lines or along diagonals of the cells. Do not use color of the cells for solving purposes.

Answer key: write down the number of dark-grey cells in every part in increasing order. For the example the answer would be: 0.5, 1.5, 2.5, 3.5.

Example:

